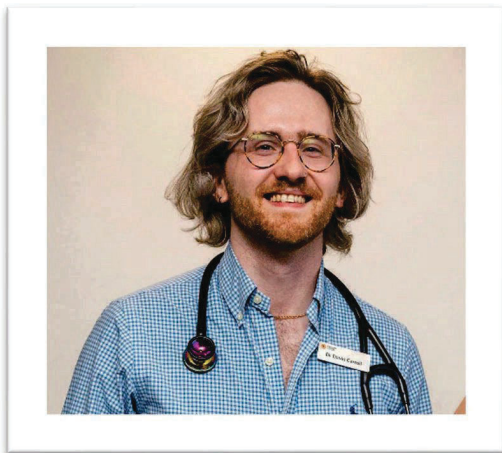




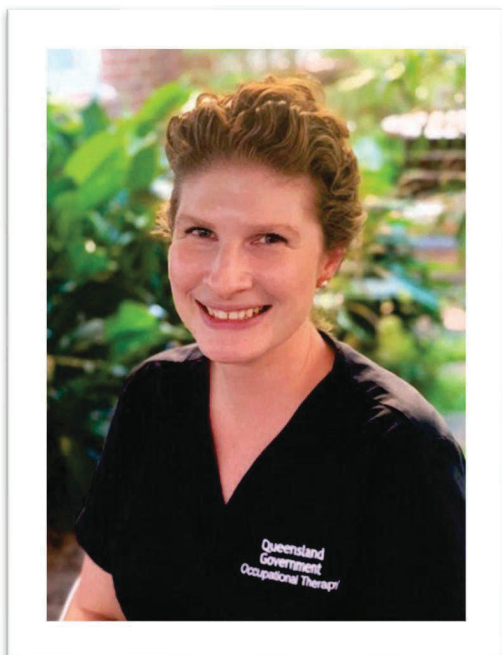
Frailty-ADD
Centre of Research Excellence

Frailty-ADD Seed Grant Scheme – 2024 Recipients



David Carroll, Geriatric Medicine Registrar, NT Health: *Can front door frailty services deliver the same improvements to care in a setting with limited resources?*

Front Door Frailty Services (FDF) aim to provide crucial support for frail individuals presenting to hospitals, ensuring timely and appropriate care. NT's population is aging rapidly; however, the NT lacks adequate community services to meet this growing demand. Current statistics reveal a shortage of residential aged care beds and limited access to home care packages. The introduction of FDF services aims to intervene promptly, preventing unnecessary hospital admissions and complications. This project involves initiating comprehensive geriatric assessment during emergency department admissions for frail patients, supported by early medical, nursing, and allied health decision-making.



Katie Arnott, Senior Occupational Therapist, Metro South Health: *Co-designing allied health clinical pathways with frail vascular surgical patients*

With the challenges of workforce and cost pressures, coupled with the impacts of an ageing population and recent global events, it's crucial for health providers to rethink existing health pathways. Frailty is a major risk factor for negative outcomes in vascular surgery, leading to increased length of stay, functional decline, and discharge to residential care. Current models have shown perioperative allied health assessment and intervention can reduce hospital stays and enhance patient mobility post-surgery. This project marks the first step in a research program aimed at co-designing meaningful allied health pathway changes for frail vascular surgery patients.